



| Kingswood, Albrighton | Wolverhampton | WV7 3AJ

£1,300 Per month

Jackson
LIFE & CLOSE

Key features

Description

Ground Floor:

Hall Entrance

Lounge having uPVC double glazed oriel window, side window, fireplace with marble insert and raised hearth, gas living flame fire, covered radiator, moulded dado rail, TV aerial point, decorative ceiling rose and uPVC double glazed walk out window

Dining Room/Sitting Room: having double glazed oriel window, Regency style fireplace, radiator, wall light points and TV aerial point.

Kitchen: part tiled and containing inset stainless steel sink with mono bloc mixer tap, fitted base and wall cupboards, built in "Hoover" electric oven, separate gas hot unit, extractor fan, decorative wall tiles, ceramic tiled floor, TV aerial point, moulded dado rail and coated aluminium double glazed patio window with sliding door to:

uPVC Double Glazed Conservatory:

Utility: with ceramic tiled floor, uPVC double glazed windows and door to the rear garden.

Rear Hall: having radiator, coved ceiling, decorative wall plaque and ceramic tile floor.

Toilet: with low level suite, radiator, coved ceiling, tiled walls and floor.

Bathroom: having white suite comprising corner bath with mixer tap having shower attachment, vanity unit, corner shower cubicle with Gainsborough shower, built in storage cupboard with mirrored sliding doors, concealed ceiling spot lighting, radiator, uPVC double glazed window and ceramic tiled floor.

First Floor

Half Landing

Bedroom 1: having uPVC double glazed window, radiator, laminate floor, moulded dado rail, coved ceiling, range of fitted wardrobes with mirrored sliding doors and two further single wardrobes.

Directions

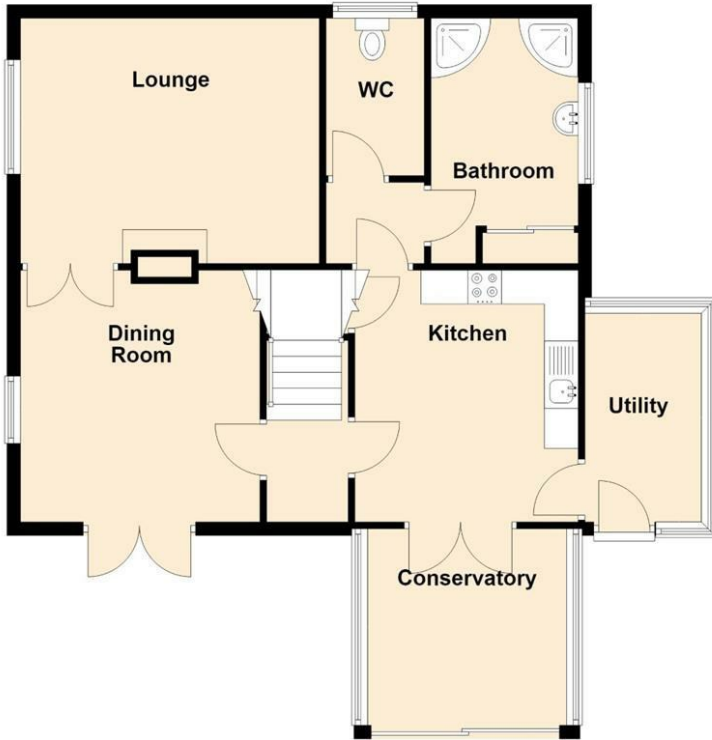




Floor plans

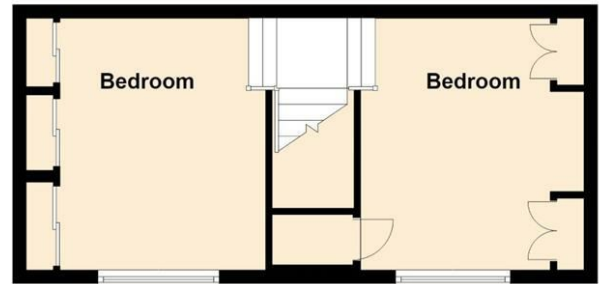
Ground Floor

Approx. 76.2 sq. metres (820.1 sq. feet)



First Floor

Approx. 30.8 sq. metres (331.7 sq. feet)



Total area: approx. 107.0 sq. metres (1151.7 sq. feet)

Energy Efficiency Rating		
	Current	Potential
<i>Very energy efficient - lower running costs</i>		
(92 plus) A		
(81-91) B		
(69-80) C		
(55-68) D		64
(39-54) E	48	
(21-38) F		
(1-20) G		
<i>Not energy efficient - higher running costs</i>		
England & Wales	EU Directive 2002/91/EC	

Jackson
LILE & CLOSE

12 and 13 King Street
Wolverhampton
West Midlands
WV1 1ST
01902 712812

jacksonlileclose@btconnect.com
<https://www.jacksonlileandclose.co.uk/#/>